

# Training Grant Administrators' Workshop 2.0 March 16, 2017

**Thomas A. Pearson, MD, MPH, PhD**  
**Executive Vice President for Research and Education**  
**UF Health**  
**Professor of Epidemiology and Medicine**  
**University of Florida**



# WORKSHOP GOALS

- 1. Review progress made in the maintenance and growth of federally supported training (T Series) grants at UF.**
- 2. Identify remaining barriers and challenges to administration of T32 grants at UF.**
- 3. Share best practices of your peers.**
- 4. Discuss plan for new services for T32 administrators.**

# **PRE – AND POSTDOCTORAL TRAINING PROGRAMS AT UF HSC**

## **Organized by Department/College**

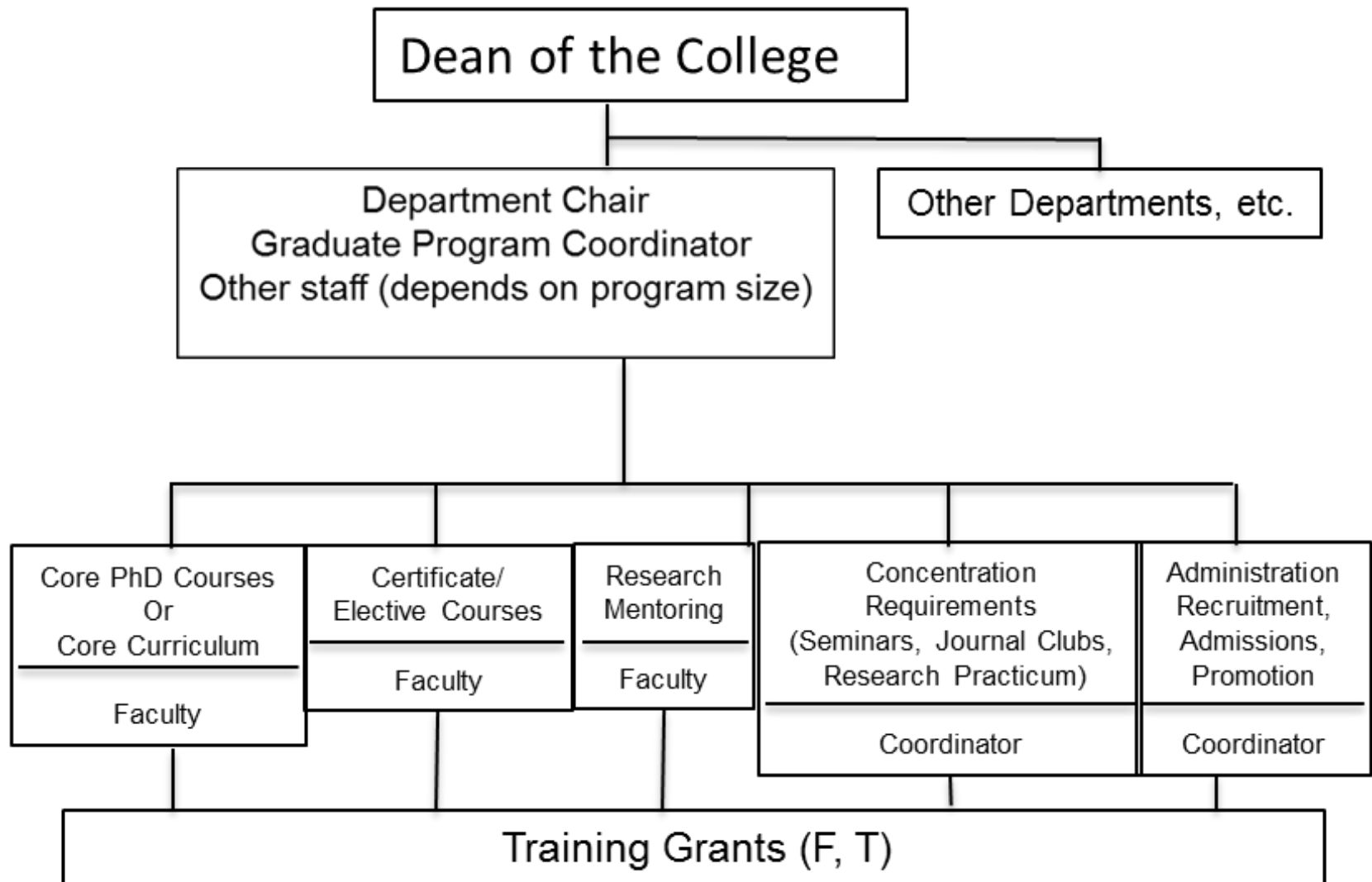
### **Predocctoral Programs**

- **591 PhD Candidates in 29 PhD Programs**
- **62 Graduate Students Supported by 11 T32 Programs**
- **10 Graduate Students Supported by F Awards (2 F30, 8 F31)**

### **Postdoctoral Programs**

- **259 Postdoctoral Trainees (232 Research Associates, 27 Fellows at HSC)**  
**(658 Postdoctoral Trainees (626 RA, 32 PDF for entire UF)**
- **25 Postdoctoral Fellows Supported by 8 T32 Programs**
- **3 Postdoctoral Fellows Supported by F32 Awards**

# Organizational Chart for Individual HSC College Graduate Programs



**TABLE 2. Ph.D. Programs at UF HSC for 2016 (as of 10/31/16)**

<b>UF HSC College</b>	<b>PhD Programs</b>	<b>Students Enrolled (Fall, 2016)</b>	<b>% Minorities</b>	<b># Graduates 2015-2020</b>	<b>Completion Rate (2007-2010 Matric)</b>
<b>MED/DENT</b>	<b>Medical Sciences</b>	<b>194</b>	<b>9.3</b>	<b>37</b>	<b>76.4</b>
<b>MED (Interdisc)</b>	<b>Genetics/Genomics</b>	<b>26</b>	<b>23.1</b>	<b>3</b>	<b>81.0</b>
<b>MED/PHP</b>	<b>Epidemiology</b>	<b>23</b>	<b>13.0</b>	<b>4</b>	<b>36.4</b>
<b>PHARM</b>	<b>Pharmacological Sciences</b>	<b>92</b>	<b>3.3</b>	<b>19</b>	<b>71.4</b>
<b>NURSING</b>	<b>Nursing Sciences</b>	<b>34</b>	<b>17.6</b>	<b>3</b>	<b>68.2</b>
<b>PHP/LS</b>	<b>Communication Science</b>	<b>10</b>	<b>20.0</b>	<b>4</b>	<b>43.5</b>
<b>PHP</b>	<b>Health Services Res.</b>	<b>9</b>	<b>22.2</b>	<b>3.</b>	<b>44.4</b>
<b>PHP</b>	<b>Psychology</b>	<b>76</b>	<b>18.4</b>	<b>12</b>	<b>88.4</b>
<b>PHP</b>	<b>Rehab Sci</b>	<b>33</b>	<b>9.1</b>	<b>4</b>	<b>69.6</b>
<b>PHP</b>	<b>Biostatistics</b>	<b>22</b>	<b>0.0</b>	<b>7</b>	<b>60.0</b>
<b>PHP</b>	<b>Public Health (Begin 2011)</b>	<b>34</b>	<b>23.5</b>	<b>10</b>	<b>-</b>
<b>VET MED</b>	<b>Veterinary Med Sci</b>	<b>38</b>	<b>13.2</b>	<b>5</b>	<b>69.0</b>
<b>TOTAL</b>		<b>591</b>		<b>111</b>	

# CURRENT T32 TRAINING GRANTS AT UF AS OF 03/24/16

PI	College/Department	Topic Area	Pre	Post	End Date
Bowers/Vallencourt	PHHP/Clinical & Health Psychology	Movement Disorders	4	0	04/20
Bloom	Medicine/MGM	Microbiology	5	0	07/19
Burne	COD/Oral Biology	Oral Biology	8	5	06/16
Cottler	COM-PHHP/Epidemiology	Epidemiology Addiction	4	2	06/19
Fillingim	COD/Comm Dent& Behav Science	Pain and Aging	0	4	08/20
Khan	Medicine/Urology	Medicine	0	2	07/18
Mariske	PHHP/Clinical and Health Psy	Social Factors & Health	6	0	08/18
McCormack	Medicine/Medicine	NRSA Training Core	10	0	03/19
Moldawer	Medicine/Surgery	Burns and Trauma	0	3	06/19
Scott	Medicine/MGM	Regent Medicine	4	2	06/17
Segal/Wood	Medicine/Medicine	RETAIN Program	4	2	05/20
Smith	Ophthalmology/Medicine	Eye Disease	5	0	07/21
Vandenborne	PHHP/Physical Therapy	Neuromuscular Rehab	6	0	04/19
Wood	Physiology/Functional Genomics	Hypertension	3	3	06/18
Reeves	Medicine/Medicine	Rheumatic Diseases	<u>3</u>	<u>2</u>	07/18
			<u>62</u>	<u>25</u>	

**Table 6. RESEARCH ASSOCIATES AND POSTDOCTORAL FELLOWS AT THE UF HSC\* 08/2016**

<b>COLLEGE/UNIT</b>	<b>RESEARCH ASSOCIATE</b>	<b>FELLOWS</b>	<b>TOTAL</b>
<b>Vet Medicine</b>	30	0	30
<b>Medicine</b>	132	11	143
<b>Med-JAX</b>	2	0	2
<b>Nursing</b>	1	0	1
<b>Pharmacy</b>	38	0	38
<b>PHHP</b>	15	4	19
<b>Dentistry</b>	13	7	20
<b>Biostatistics</b>	1	0	1
<b>Epidemiology</b>	0	5	5
<b>TOTAL</b>	232	27	259

\*Among 32 Postdoc Fellows and ~626 Postdoc Associates in UF

# T32 Problems and Progress

- **NIH Funding Trends, Financial Cost/Benefit**
  - 8% IDC Rate
  - Support for Director and Coordinator
- **Trainee Benefits**
  - Health Insurance
  - Tax Status
- **Application Burden (Tables, Trainee F/U, Resources)**
- **Identifying and Rewarding Mentors**
- **Trainee Recruitment, Retention, and Diversity**
- **Curriculum and Educational Evaluation**
- **Trainees and T32's at Other UF Campuses**



# T32 Economics

- **Displacement of stipend and tuition from RO1**  
**Predoctoral (\$40,000/hr./trainee)**  
**Postdoctoral (\$46,700+/trainee)**
- **Support for PI (Director and Coordinator) from Department?**
- **Tuition for predoctoral fellows (\$16K/yr.)**  
**? Degree programs for postdoctoral fellows**
- **Institutional support for shared services**  
**Educational Development and Evaluation**  
**Follow-up of trainees**  
**Grant application support (e.g. Tables)**

# Training Grant Toolkit

<http://www.ctsi.ufl.edu/education/grant-workshops/>

- I. Training Grant Application Workshop
- II. National Research Service Award (PA-16-015)
- III. Current training grants at UF HSC
- IV. Library of T32 applications and critiques
- V. Training Grant Application Timeline
- VI. Identifying Mentors at UF HSC.
- VII. Resources (Boiler Plate)
  - CTSI Facilities and Resources (36)
  - UF Colleges (16)
  - Other Facilities and Resources Affiliated with UF (60)
- VIII. Certificate Programs

# Training Grant Toolkit (cont.)

<http://www.ctsi.ufl.edu/education/grant-workshops/>

- IX. Plan for Instruction in Responsible Conduct of Research**
- X. Marketing of UF Training Programs**
- XI. Recruitment and Retention Plan to Enhance Diversity**
- XII. Institutional Commitment Letter**
- XIII. Health Insurance Coverage**
- XIV. Assistance for Training Grant Administrators**
- XV. Stipends, Tuition/Fees, etc. (NOT-OD-16-047)**
- XVI. Data Tables Required for T32**
- XVII. Follow-up and Tracking of T32 Appointees**
- XVIII. Acknowledgement of CTSA grant on T Proposals**

**THANK YOU!**